

# BRM PROJECTS

---

WORKPLACES THAT WORK WELL

End to End Commercial Property and Workplace Solutions



**Address**

125 Union St, Windsor

**Contact**

Phone: (03) 9521 1007

Email: [contact@BRMprojects.com.au](mailto:contact@BRMprojects.com.au)

[www.BRMprojects.com.au](http://www.BRMprojects.com.au)



## ABOUT US



With over twenty years of experience, BRM Projects has contributed to the majority of Victoria's largest infrastructure projects.

We combine expert knowledge and analysis with exceptional services to deliver independent property and relocation advice that achieves the best outcomes for our clients.



# BRM PROJECTS IS

- A licenced real estate advisory firm
- Member of the Property Council Of Australia
- A licenced building practitioner (drafting) and member of the Victorian Building Authority
- An approved panellist on the 9th Valuation Services Panel of the Valuer General Of Victoria (VGV) under the Department Of Environment, Land, Water And Planning
- Compliant in required insurances (Professional Indemnity to \$10m, Public Liability to \$20m)
- Multi-disciplined in design, property and project management
- A B Corp certified member and B Corp Award Winner



## WE SPECIALISE IN

- Compulsory Acquisition Relocation Assessments and consultancy for various departments and authorities
- Partial acquisition and replacement premises analysis
- Expert Witness reports (advice provided to Supreme Court, Magistrates Courts and VCAT)
- Mediation advice, strategy and post mediation reports
- Large volume reports for major infrastructure projects using systems and resources
- Agency transaction and property advice
- Make Good, Condition and Dilapidation reports
- Project Management of sub consultants and specialised experts
- Drafting, documentation and layout analysis

# WHAT WE'VE ACCOMPLISHED SO FAR

Over 250 relocation assessments for full and partial land acquisition cases in commercial and industrial sectors.

**Pre-Boundary and extensive acquisition advice on:**

- West Gate Tunnel Project
- Level Crossing Removal sites
- Melbourne Metro Rail Tunnel
- East West Link
- Regional Rail Link

**Single premises claims**, including the Shepparton Court expansion, Yan Yean Road Duplication, Barwon Water and various local councils.





# UNRIVALLED EXPERTISE IN PROPERTY SERVICES AND BEYOND

As part of our wider service, BRM Projects offers end to end management and delivery of commercial property and workplace solutions.

BRM Projects provides search, fitout and relocation guidance across commercial, retail and industrial properties, priding itself on exceptional service and ongoing relationships formed through projects.





# UNRIVALLED EXPERTISE IN PROPERTY SERVICES AND BEYOND

## PROPERTY ADVICE & STRATEGY

---

Commercial property search,  
fitout and relocation

Compulsory Acquisition and business  
impact/disruption

Partial acquisition

Make Good Advice

Expert Witness reports

Condition and dilapidation reports

Mediation & conference advice and  
post meeting reports

Tenancy disputes and issues

## WORKPLACE DESIGN

---

Combining the latest concepts  
with innovative design, our team  
of designers work with our clients  
to realise the potential of their  
workplace

Based on our clients' needs we guide  
teams on how to achieve the most  
effective balance between culture,  
design and function

## PROJECT MANAGEMENT

---

Search

Independent commercial audits

Management of architectural and  
engineering reviews

Feasibility studies and needs analysis

Guidance through design,  
documentation and spatial analysis

Fitout

Tendering, construction and handover

Management of budget & timelines

Relocation with minimum downtime

Support pre and post relocation

## WORKPLACE CONSULTING

---

Change Management

Staff engagement

Accommodation Strategy

Turnkey Service - from concept,  
through to physical relocation, make  
good and handover

## MEET THE EXPERTS

---

---



### GAB AGHION

DIRECTOR

Gab Aghion is tertiary qualified (Bachelor of Science: Honours in Organisational Psychology and Change Management) and has in excess of 20 years of project management experience guiding organisations through the search, fitout and relocation process.

Commencing his career in 1997 for a multi-national and then contracting, Gab founded BRM Projects in 2004 with the goal of providing a single point of contact for companies navigating the search, fitout and relocation journey.

In 2010 and following a client's compulsory acquisition and relocation, Gab and BRM Projects successfully tendered and delivered every relocation assessment for the Regional Rail Link, reporting to the Valuer-General Victoria, Department of Transport and Regional Rail Link Authority. Since then Gab has provided advice at Federal, State and Council level for both Authorities and claimants, and to date has prepared hundreds of assessments including expert witness evidence to the Supreme Court, Magistrates Courts and VCAT.



### STEVE SCHMIDT

DIRECTOR

Steve Schmidt has over 15 years creative and commercial experience in Australian retail, fashion and hospitality industries supported by tertiary qualifications in architecture and sustainable design.

Steve offers a unique suite of design skills and business understanding - ensuring client's projects are translated and delivered to meet every need - functionally, economically and stylistically.

Since joining BRM Projects, Steve has worked with the leadership of various organisations, from large Not For Profits to small and medium professional services in helping them attain their workplace goals. He prides himself on building functional and inspiring spaces, combining design and accommodation strategy to encourage cohesive workplace cultures and that drive growth and success.



### PETER NORTHWOOD

OFFICER IN EFFECTIVE CONTROL

As an experienced auctioneer, lease negotiator and asset manager, there are few circumstances that Peter Northwood has not been involved with. From complex lease negotiations dealing with tenants, to asset strategy advice and rental review strategies Peter has bought and sold property privately and at auction successfully for many clients.

Peter is considered by his clients to be a valuable resource to their executive team.

Peter is a highly experienced property executive with a strong commercial property background, managing multi and single site portfolios. He possesses highly developed competencies in negotiating complex leases and developing and maintaining excellent communication and management skills



### ANDY ZHANG

PROPERTY ADVISOR

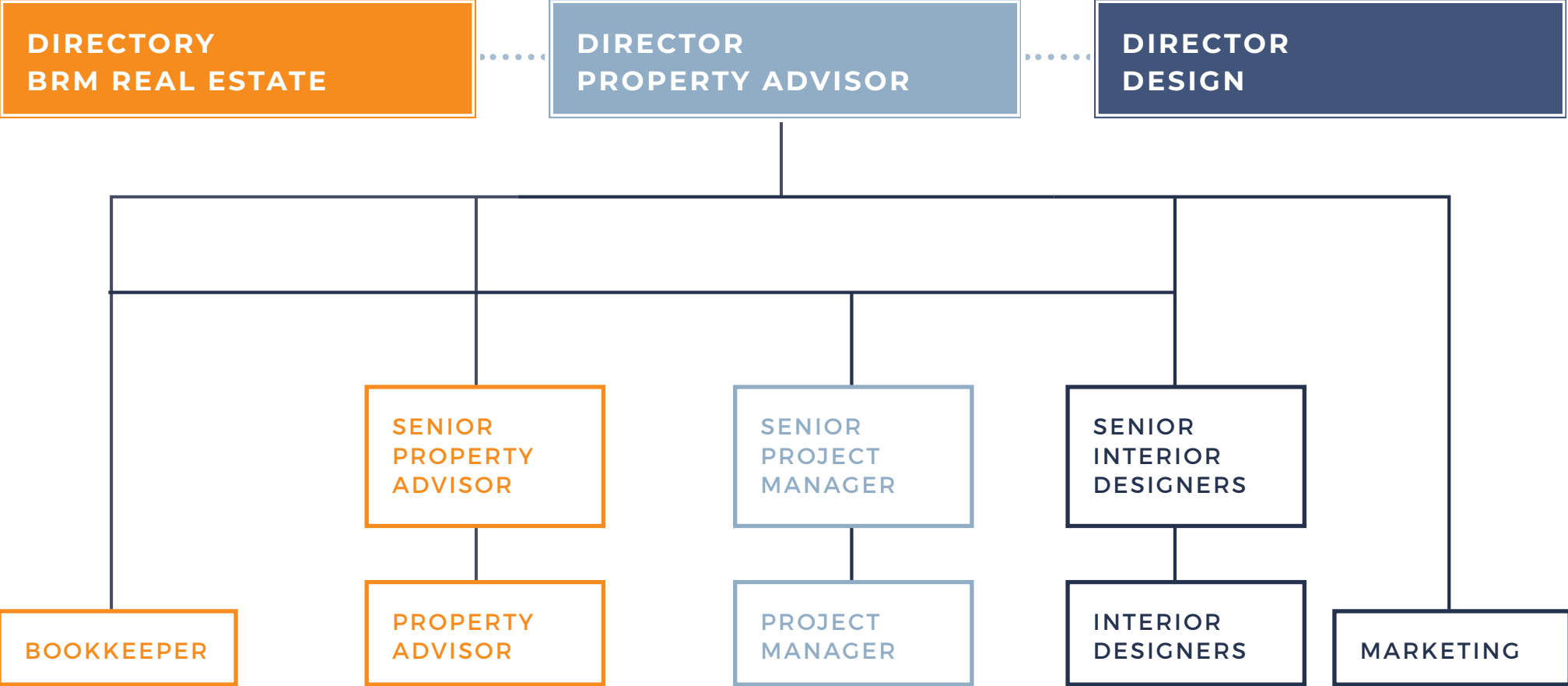
Andy Zhang is tertiary qualified (Bachelor of Environments & Masters of Property) and has a strong understanding of commercial markets within Australia. Combined with a high level of communication and organisational skills, and a passion for property he is our number one property advisor and junior project manager.

Andy has been with BRM Projects for several years working on compulsory acquisition, business relocation advice and high level property strategy.

He has accumulated a vast amount of experience and has assisted with well over 200 relocation assessments across Victoria's largest infrastructure projects. With a strong knowledge of property legislation, planning and strategy, Andy brings an added dimension to our corporate real estate and accommodation strategy offering.

# OUR TEAMS

BRM's in-house team of dedicated industry professionals delivers reports and projects on time and within budget, forming long term relationships with clients who value a single point of contact in the delivery of multiple services.







# CO-ORDINATE & COLLABORATE WITH EXPERTS

BRM Projects co-ordinates and collaborates with experts in the following fields:

- Quantity surveying
- Building surveying
- Plant and equipment valuations
- Heavy haulage and equipment relocations
- Forensic accounting and business valuations
- Fitout estimating
- Structural engineering
- Town planning
- Traffic engineering
- Acoustic consulting
- Large format static and digital signage
- Telecommunications
- Industrial kilns
- Electrical engineering and switchboards
- Injection moulding
- Food processing and warehouse design



End to End Commercial Property and Workplace Solutions

**INDEPENDENT COMMERCIAL PROPERTY  
AND RELOCATION ADVISORS**



**Address**

125 Union St, Windsor

**Contact**

Phone: (03) 9521 1007

Email: [contact@BRMprojects.com.au](mailto:contact@BRMprojects.com.au)

[www.BRMprojects.com.au](http://www.BRMprojects.com.au)